



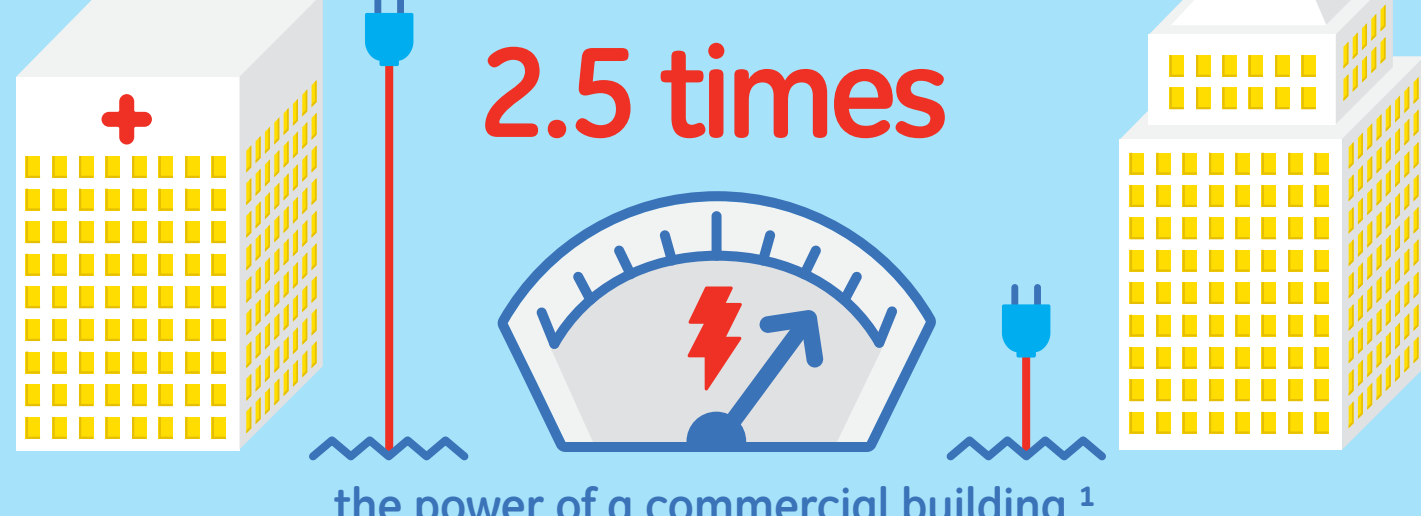
# CRITICAL POWER FOR HOSPITALS

Brought to you by GE

When a power outage strikes a hospital, the protection provided by **GE's electrical system** means critical power continues to perform uninterrupted.

## POWERING A HOSPITAL

An average U.S. hospital uses



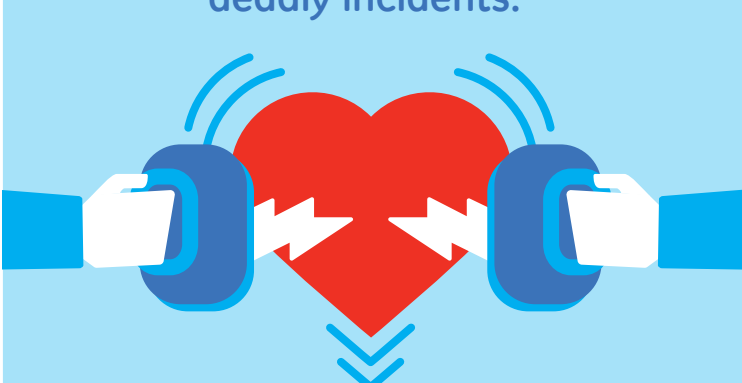
## FAILURES ARE COSTLY

Ensuring a facility's electrical infrastructure delivers power **24/7** requires fully-integrated utility and emergency power systems.

**1/20** hospitals are unprepared for power disruption<sup>2</sup>

**~400** hospitals in the U.S.<sup>2</sup>

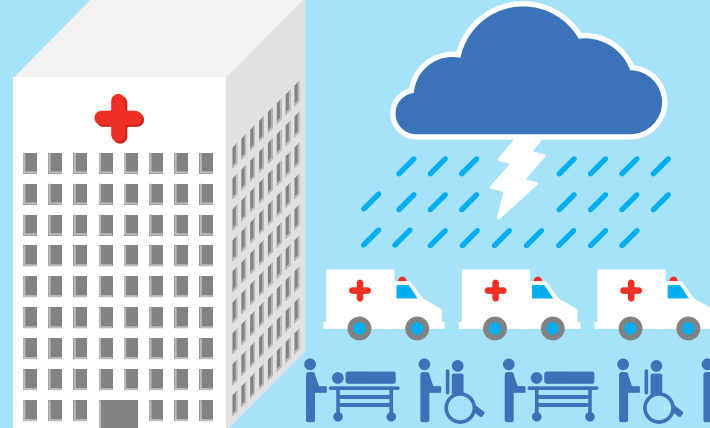
A Joint Commission study revealed utility system failures are in the top **20 preventable** deadly incidents.<sup>3</sup>



Electricity failures during Hurricane Katrina led to **34 patient deaths** and a class-action lawsuit.<sup>2</sup>

Power failure during Hurricane Sandy forced NYC hospitals to evacuate<sup>5</sup> and <sup>6</sup>

**900 patients**



## MEETING THE REQUIREMENTS FOR EMERGENCY PREPAREDNESS

**72 hrs** The hours of emergency power operation required by the American Osteopathic Association for accreditation.<sup>6</sup>

**96 hrs** The hours hospitals accredited by the Joint Commission must be able to sustain themselves after a loss of power.<sup>7</sup>

## SECONDS MATTER

RUSH UNIVERSITY MEDICAL CENTER RELIES ON GE CRITICAL POWER

The new centralized critical power system installed at Rush University Medical Center replaced the individual critical power systems at each of 13 buildings. The new central system design enables the distribution of utility and emergency power across the campus.

To learn more about this project, visit [www.ge-spark.com/rush](http://www.ge-spark.com/rush)

### MEASURES OF SUCCESS

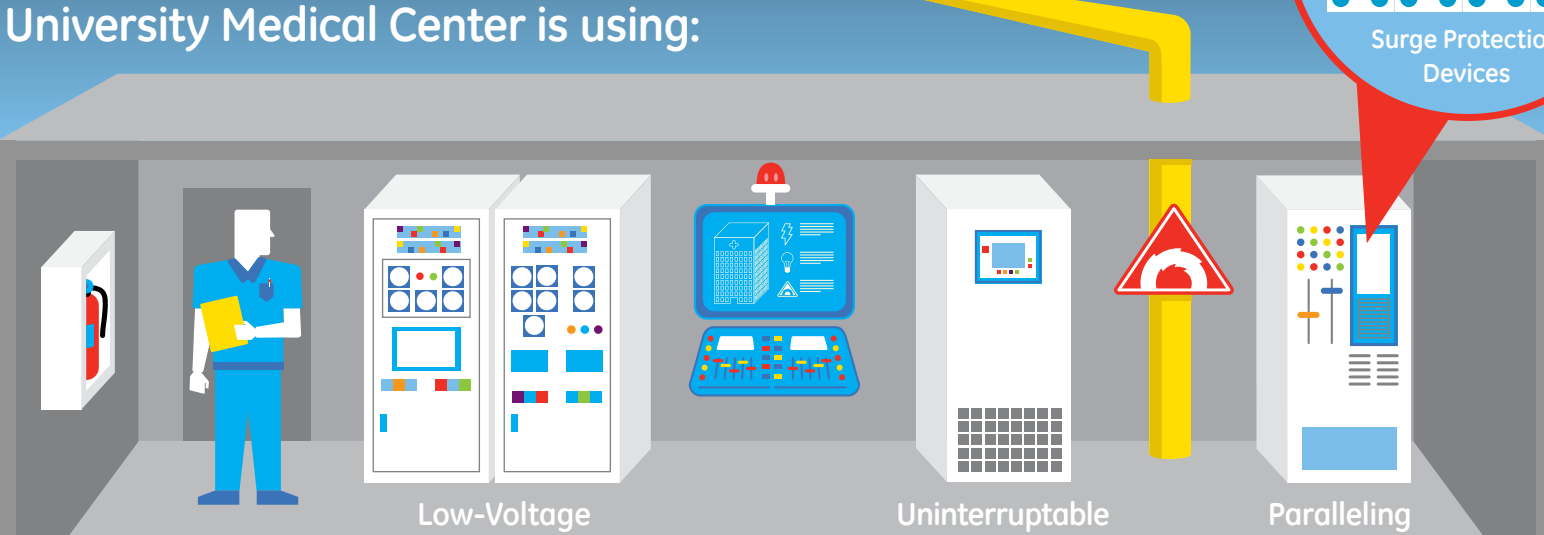
**104 fewer hours** to maintain the electrical distribution system, equal to the time it takes to perform 890 EKGs

**10 secs** outage response time of GE's critical power system

**100%** electrical distribution system reliability

**24/7** monitoring and trouble shooting of the system

GE's power solutions that Rush University Medical Center is using:



### IS YOUR HOSPITAL PREPARED FOR UNPLANNED POWER DISRUPTION?

For more information on how to be emergency-power prepared with GE's critical power systems, visit [www.geindustrial.com/criticalpower](http://www.geindustrial.com/criticalpower), and to learn how GE is supporting with customers in the healthcare industry, visit [www.geindustrial.com/healthcare](http://www.geindustrial.com/healthcare)

<sup>1</sup> Fast Company's "The Most Energy-Efficient Hospital In The Country" article: <http://bit.ly/JLwjHd>

<sup>2</sup> Bloomberg News' "Hospital Evacuation in N.Y. Exposes Outdated Power Backup" article: <http://buswk.co/RiukIT>

<sup>3</sup> The Joint Commission's Sentinel Event Statistics report: <http://bit.ly/Rteh6a>

<sup>4</sup> The Press Enterprise's "Inland Hospitals Cover What-If Disaster Scenarios" article: <http://bit.ly/Umyvgz>

<sup>5</sup> Associated Press "Hurricane Sandy Prompts Harrowing NYC Hospital Evacuation" article: <http://bit.ly/X5ywLp>

<sup>6</sup> The New York Times' "Patients Evacuated From City Medical Center After Power Failure" article: <http://nyti.ms/PDR06J>

<sup>7</sup> Reuters "New York's Bellevue Hospital Evacuating about 500 Patients" article: <http://nbcnews.to/Y2qGPi>